



your smart cloud access



Agile4PC transforms your network PCs into flexible and fully managed devices.

With Agile4PC and the ThinMan management software you can centrally control all your PCs. The simplified interface gives you the ability to lock desktops and protect PCs from undesired installations and malware.

Management and control

Administer all your PCs with just one tool

Agile4PC connects your PCs to the ThinMan management console. With ThinMan you can monitor, configure and distribute software on your PCs and automate any operation, freeing up your time.

Monitor and manage corporate PCs inside and outside the Microsoft domain

By using ThinMan management console you can search and view all Agile workstations in a tree structure. Thanks to the console you can quickly organize your workstations into groups, by customizing the management platform according to your preferences and needs.

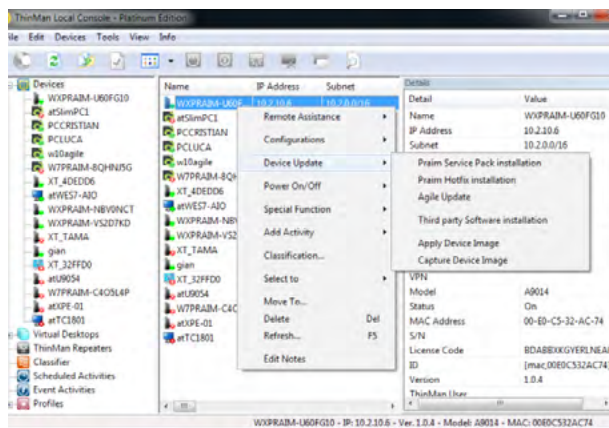
Manage your PCs and the access configurations to Citrix, VMware, Microsoft RDS

Power on, power off, configuration and refresh of workstations are just some of the tasks the administrator can perform. All management activities can be driven directly from ThinMan console on individual devices or managed groups.

Manage Wi-Fi network configurations

Through Agile4PC you can easily configure the access configuration to the corporate Wi-Fi network and then distribute it to all endpoints.

Deploy software installation packages



Agile devices can receive third-party software installation packages in addition to dedicated configurations.

A very simple wizard, included in ThinMan console, makes elementary a process that would otherwise be very complex in distributed environments.

Provide remote support on PC

All Agile devices enjoy the remote support system offered by ThinMan. Help desk operators can launch remote support sessions directly from the console, without the need to resort to external tools, with great service time/cost simplification and optimization.



Desktop lockdown

Make your PCs completely secure

Agile4PC allows you to replace the Windows desktop with a smart and controlled interface for accessing local and remote applications.

Replace the Windows desktop with a smart interface and block access to configuration parameters

The user has access to the resources configured for him, through a simple interface, similar to a modern smartphone.

Exclusive access to system parameters is reserved to the administrator, who may decide which configurations the user can access and block all undesired operations.

Block disk writing with Microsoft UWF (Unified Write Filter) management

Agile can directly manage Microsoft Enhanced Write Filter (EWF) and Unified Write Filter (UWF) functions in embedded systems and PC systems, where present and enabled.



Deploy security certificates and password expiration management

Within the configuration and workstations update activities you can include the distribution of security certificates, avoiding the use of more complex Microsoft domain Group Policy.

Authentication via Wi-Fi network and ThinMan Login functionality

Agile allows you to take advantage of Wi-Fi network access to authenticate the user and grant access corporate resources. With the joint use of ThinMan Login you'll ensure security and instantly deployment a configuration profile to the device.

Browser kiosks

Create your kiosks in a few seconds

With Agile4PC only 5 clicks are enough to create a customized full screen browser kiosk. From the information point to digital signage, with Agile you can create and control the kiosk in a simple and automatic way.

With Agile4PC, the administrator can customize access to the browser, enabling or disabling the address bar and the navigation and search commands to the user.

Agile4PC is perfectly compatible and particularly suitable for creating work stations with touch support.

Available for Windows 7, Windows 8.1 e Windows 10 devices.

Licensing

Agile4PC can be purchased as an annual lease fee per device.

The fee is available in two versions, for integrated use with ThinMan management console.

Agile4PC Premium - New License - Lease fee, 1 Endpoint

Agile4PC Platinum - New License - Lease fee, 1 Endpoint



Praim Agile4PC	Agile4PC Premium	Agile4PC Platinum
Features		
Desktop lockdown with Agile Mode	✓	✓
Bg Info customization	✓	✓
User settings customization - Video - Mouse - Keyboard - Audio	✓	✓
Grafic customization Agile mode - Background image - Layout colors - Logo image	✓	✓
Certificate manager	✓	✓
Wi-Fi manager	✓	✓
Wi-Fi Login	Yes, in Agile mode	Yes, in Agile mode
ThinMan Smart Identity	-	Yes, in Agile mode
Resources manager		
Connection autostart	✓	✓
Remote assistance	✓	✓
Supported connections		
Google Chrome	✓	✓
Internet Explorer	✓	✓
Local application	✓	✓
Citrix receiver	✓	✓
VMware Horizon Client	✓	✓
Microsoft RDP client	✓	✓
Management		
Management of Agile4PC with ThinMan	✓	✓
Software Distribution	✓	✓
Remote Service Support	✓	✓
ThinMan Login Access Management	-	✓
Easy activity management (Scheduler)	3 activities only	✓
Device profiling	3 profiles only	✓
Classifier	-	✓
ThinMan Repeater Support	-	✓
Inventory & Log management	-	✓
Supported O.S.		
Windows 10	✓	✓
Windows 8.1	✓	✓
Windows 7	✓	✓

Ver. 1.4 March 2018