



THINMAN

the management

A single console for managing all your endpoints

The software for centralized management of all your endpoints: Thin & Zero Clients, as well as PCs.

ThinMan keeps operational expenses in check by reducing the time required to manage workstations.

Organization

With ThinMan, all the information about your endpoints and their configuration is at your fingertips. With the structured tree interface, doing maintenance is easy.

Automatic discovery of network devices

ThinMan carry out an automatic search of all Praim devices present in the network, both through broadcast and through IP range. In such a way, ThinMan browse devices in a local LAN and in complex WAN geographical networks.

Organization in groups and automatic assignment of new devices

ThinMan allows the positioning, even automatic, of devices within specific groups, organized either upon their IP ranges or their physical disposition.

Simplified search and filter functions

The devices can be easily sorted, filtered and searched using one or more device properties or by user.

Complete device information: RAM, disks, connections, firmware versions and connected USB devices

Thanks to ThinMan, you can view many features for each device.

All these attributes can be managed by filters, allowing to identify very quickly the devices on which it is necessary, for example, to perform an update.

Management

ThinMan provides simple, complete endpoint management: power management, software updates, application installs, configuration, and remote assistance. Maintenance is just a few clicks, saving time you can spend on strategic tasks that grow the company.



Wake on Lan ed energy management

ThinMan supports the remote power on and off on those Thin Clients equipped with a Wake On LAN support. With a simple click, users can easily power on and off remote devices on the network (even groups at scheduled tasks).

Configuration management

ThinMan allows you to receive the configuration of a remote device, with the purpose of modifying it, saving it and then restoring it or using it as a template to distribute the same configuration on other devices.

Distribution of updates and configurations

ThinMan is a great way to keep the Thin Client estate up to date with the latest firmware or configuration available. The update operations can be centrally performed on both single devices or groups of devices, in multiple and scheduled mode.

Reset, cloning and recovery

ThinMan allows you to easily restore network devices and offers an extremely simple workflow for cloning and restoring Windows Embedded devices.

Third-party software distribution

Thanks to the third-party software distribution feature, it is possible to distribute and install applications in devices equipped with Windows, ThinOX, Agile4PC or ThinOX4PC devices (Thin Clients or PCs).

Repository of configuration templates and firmware

ThinMan provides a repository for the maintenance of configuration templates and firmware updates.

Integrated remote support system

ThinMan includes a remote assistance service to the managed devices. With this feature you can launch a shadowing session of the device where the help desk operator can operate, both to act on the workstation's setup, or to assist the user on enterprise applications.

Automation

Schedule automatic distribution to endpoints using personalized configurations. It's easy to create and configure workstations for any user or department according to their needs and the type of endpoint.

Management of activities on the device by groups and by multiple selection

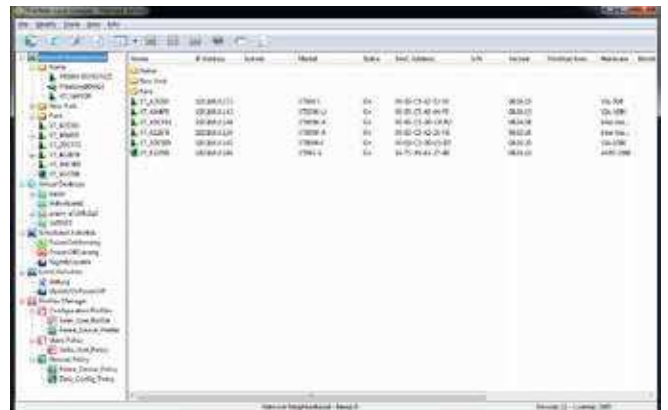
ThinMan supports the execution of remote operations for device groups. The user using a multiple selection can directly and easily switch on or update an entire group of devices.

Activity scheduler

The integrated scheduler allows to plan single, multiple or group operations towards remote devices.

Execution of activity on device's power on/off

The scheduling of actions can be easily combined with events such as turning the endpoint on or off, for greater granularity in the application of policies.



ThinMan Profile Manager

This feature allows you to provide devices with different configuration profiles, based on policies defined by group or individual device. ThinMan Profile Manager is designed to be extremely scalable, from small installations of a few units, to enterprise installations of thousand devices.

Classifier

The classification can be used to automatically apply configuration profiles, to perform configuration actions or inventory actions, also transversely to groups of devices.

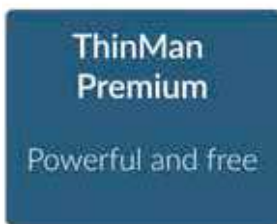
ThinMan Login: secure authentication for users

ThinMan Login is the feature that allows to protect devices from unauthorized access, defining users and groups that could access devices in the network. ThinMan Login should use its own users database, or an Active Directory database, making the personal connection available to each user independently from the devices used.

Automatic assignment of the configuration profile to the user or device

The profile manager allows to automatically configure connected devices to the company network (Zero Config). The configuration sets are automatically assigned to single devices, classes or groups, in accordance with the configured policies. Client Connections can be also set upon the specific user, in such way each user will keep its connection set independently from the Thin Client in use (Roaming profile).

ThinMan Editions



ThinMan Premium Edition: multiple features, 1 year for free!

The Premium Edition is conceived to be a complete free of charge tool for demanding IT managers. It includes a lot of essential features to assist IT administrators with reasonable complex environments.

Get your 1 year free Premium license and many other perks by registering on Praim website.



ThinMan Platinum Edition: unlimited configurations and advanced features to simplify the management of the most complex environments!

ThinMan Platinum Edition offers advanced features, unlimited configurations and multiple consoles. It is designed for enterprise multisite environments with extremely elaborated configuration needs.

The Platinum edition provides IT Managers with an extensive console to manage unlimited number of devices in a fully automated way, and to distribute management operations and help-desk functions to multiple operators.

	ThinMan Premium Edition	ThinMan Platinum Edition
Access Mode		
Multi operator Local Console	Single user	Multiple users
Remote Console	Single user	Multiple users
Web Console	Single user	Multiple users
Access Control List to the console Local Users (ThinMan Access Control)	Single user	Multiple users
Access Control List to the console Active Directory Users (ThinMan Access Control)	-	Multiple users
Dispositivi supportati		
Thin Client Praim	Up to 10000	Based on license
Agile4PC	Based on Agile4PC subscription	Based on Agile4PC subscription
Agile4Pi	Based on Agile4Pi subscription	Based on Agile4Pi subscription
ThinOX4PC	Based on ThinOX4PC subscription	Based on ThinOX4PC subscription
ThinMan Repeater	-	Based on license
Devices organization and information		
Automatic search of devices via broadcast/IP range	✓	✓
Quick search based on device properties	✓	✓
Devices sorted by properties	✓	✓
Creation of device groups	✓	✓
Group properties for IP range and SubNet Mask (TCP/UDP)	✓	✓
Group view with devices positioning on custom background	-	✓
Groups view based of filters based on user groups	-	✓
Details view with chronology of new added device and last notification	✓	✓
Details view with characteristics of RAM and disk memory	✓	✓
Device administration		
Device power off and reboot	✓	✓
Wake-On-LAN	✓	✓
Wake-On-LAN Relay - Power on for branch offices	-	✓
Monitoring of the device status	✓	✓
Remote control (shadowing) of the devices	✓	✓
Actions with multiple selection of devices	✓	✓
Configurations / Updates		
Off-line configuration of devices	✓	✓
Configuration save/copy/backup/restore	✓	✓
Device software update	✓	✓
Factory reset for Thin Client XPe, WES7, WES8	✓	✓
Backup, restore and clone of Thin Client XPe, WES7, WES8	✓	✓
Third party software distribution for Thin Client XPe, WES7, WES8	✓	✓
Template repository	✓	✓
Package repository	✓	✓
Automation of activities and configurations		
Activities scheduler	Up to 3	Unlimited
Activities on event	Up to 3	Unlimited
Automatic profiles distribution per device (Zero Config)	Up to 3	Unlimited
User authentication service for local users (ThinMan Login)	✓	✓
User authentication service for Active directory users (ThinMan Login)	-	✓
Automatic profiles distribution per user (ThinMan Login)	-	✓
Dynamic view of connected users (ThinMan Login)	Only local users	✓
Classifier	-	✓
Reports		
On file inventory of managed devices	-	✓
Extend LOG diagnostics	✓	✓
ThinMan Server		
Integrated HSQL database	✓	✓
Support for external database MySQL	-	✓
Support for external database Microsoft SQL Server	-	✓
Secondary fault tolerance ThinMan server	-	✓