



Domino

The new All-In-One with 24" monitor developed in collaboration with LG

All the advantages of a single solution

Domino guarantees all the benefits and advantages of a Thin Client, in minimal space. The All-In-One platform allows a unique workspace organization, saving time and installation costs.

Enjoy all the power of the AMD Prairie Falcon GX-212JJ processor (1.2GHz up to 1.6GHz) integrated into an elegant 24" Full HD monitor with support for a second monitor in 4K (4096 x 2160 @ 30Hz), to take full advantage of all its features.

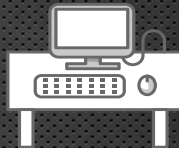
The prestigious collaboration with LG

Domino is an elegant and compact workstation. The 24" display has an essential and clean line that guarantees a exclusive style. Furthermore the collaboration with LG makes Domino technology unique in the world.

No compromise

Thanks to 6 USB ports (2 USB3.0 ports and 4 USB2.0 ports), a DP output and an HDMI input Domino is the multitasking All-In-One. In addition, the RJ45 port, integrated Wi-Fi and Bluetooth 4.2 make Domino a fully connected workstation.

Model	D9154	D9119
Type	Thin Client	Thin Client
Processor / Chipset	AMD Prairie Falcon GX-212JJ (1.2GHz, up to 1.6GHz)	
Power supply	External 100~240V (50/60Hz) 65 W	
Power consumption: on / stand by	28 W / 0.6 W	
Device dimensions / weight	553.8 (W) x 512.9 (D) x 240 (H) mm / 6.1 Kg (with stand)	
Packaging dimensions / weight	626 (W) x 194 (D) x 474 (H) / 8.25 Kg	
Certifications	CE, FCC Class B, UL, TUV	
Operational temperature range / humidity	10°C ÷ 40°C / 20% ÷ 80% non-condensing	
Security lock	Kensington	
Maximum display resolution	1920x1080 @ 60Hz, external only: 4096 x 2160 @ 30Hz	
Display ratio	16:9	
Display data control	AMD Radeon R1E	
Integrated monitor	24" IPS Display	
Pixel pitch	0.2745 x 0.2745 (mm)	
Glass treatment	Anti glare, 3H	
Contrast ratio	1000 : 1 (Typ)	
Viewing angle LR / UD	178/178(CR≥ 10)	
Luminance	250 cd/m2 (Typ) / 200 cd/m2 (Min)	
Response time	5ms (High)	
Backlight	IPS Display	
Built-in speaker	2ch Stereo x 3W	
Operating system	ThinOX	Windows 10 IoT 2019
RAM memory / Flash memory	4GB/128GB	
Input / Output		
USB ports	4 x USB2.0 + 2 x USB3.0	
Monitor	1 x DP (output) + 1 x HDMI (input)	
Audio - Mic In	1 x 1/8 inch jack	
Audio - Line Out	1 x 1/8 inch jack	
Networking		
RJ45 10/100/1000 Base T Ethernet	P	P



Mounting		
Vertical stand	P	P
Packaging included		
Power cord	P	P
USB optical mouse	P	P
Integrated Wireless 802.11ac / Bluetooth	Intel Dual Band Wireless-AC 3168 1x1 AC / Bluetooth 4.2	
Firmware	D9154	D9119
Firmware Version	ThinOX	WIN 10 IoT 2019 LTSC
Architecture	x86	x86
System type	64 bit	64 bit
Version	11	3
Size	~1 GB	~16 GB
Quick boot	P	P
UEFI O.S.	P	P
UEFI boot	P	P
Supported protocols		
TCP/IP, DNS, DHCP, SNMP MIB II	P	P
SSH	P	-
802.1X Ethernet EAP/PEAP MSCHAPV2	P	P
Protocols client		
Concurrent connections	Multiple	Multiple
Citrix		
Citrix Workspace App	P	P
HDX RealTime Optimization Pack - Suopported versions	From 2.8	From 2.8
HDX RealTime Optimization Pack - Preinstalled version	Add-on	Add-on
Citrix H.264 Enhanced Supercoded	P	P
VMware		
VMware Horizon Client	P	P
RDP	P	P
PCoIP	P	P
VMware Blast Extreme	P	P
Microsoft		
RDP	Free RDP	MS Client
RDP - Supported version	7.1 / 8.1	10.6
Microsoft RemoteFX	P	P
Installed applications		
Local Browser	P	P
Local PDF Viewer	P	-
JVM / JRE	P	-
Flash player	P	P
Shell Script	Bash	Power Shell
IBM i Access Client	P	-
Smart card support	P	-
Praim Agile	-	P
Putty VT/ASCII emulation	P	-
Printing		
Printer support	P	P
VPN		
Cisco / SonicWall / OpenVPN / Fortinet	P	P
Add on		
SafeNet Etoken Pro	P	-
Imprivata One Sign No Click Access agent	P	-
Caradigm	P	-
OCS Inventory	P	-
Warranty		
Hardware warranty - On Center Warranty	3 years	
Hardware warranty extension	Up to 5 years	